

VT FORESTLAND CONSERVATION



VERMONT'S TIMBER-BASED ECONOMY



HABITAT VALUES/TRADITIONAL RECREATION



WATER QUALITY AND FLOOD RESILIENCE



WHY NOW?



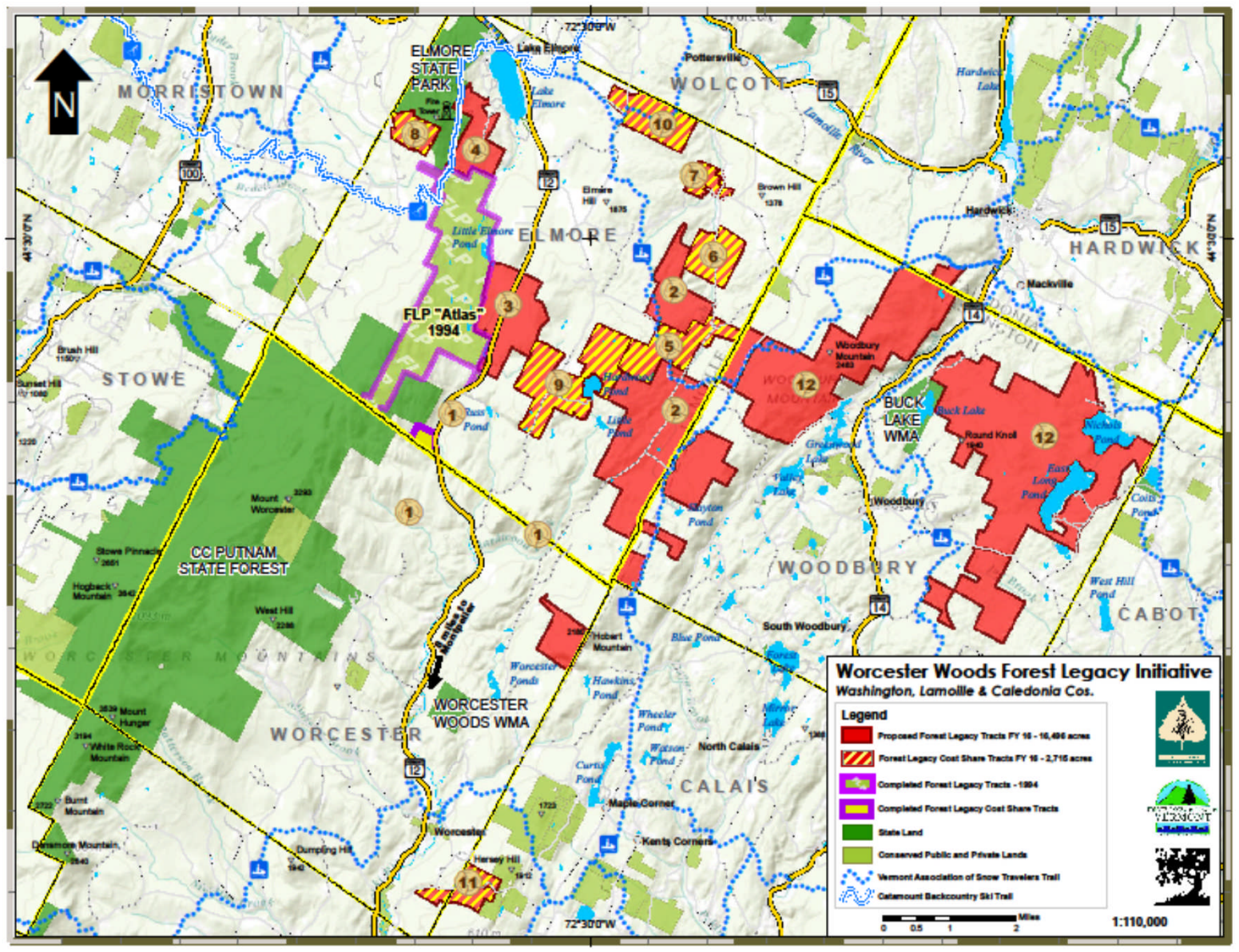
FOREST FRAGMENTATION

- ❑ **2003: “core” forest parcels – No buildings**
- ❑ **2009: 47,000 acres of “core” had houses**
- ❑ **2004–2009: 230,000 core acres sold**



WORCESTER WOODS





FOREST LEGACY PROGRAM



W WOODS CONSERVATION VALUES



- ❖ 19,211 ACRES OF WELL-MANAGED FORESTLAND
- ❖ HABITAT VALUES
- ❖ UNFRAGMENTED FOREST
- ❖ PUBLIC ACCESS
- ❖ WELL-MANAGED LARGE PARCELS
- ❖ 42 MILES OF ROAD FRONTAGE
- ❖ 96 MILES OF POND/STREAM FRONTAGE
- ❖ UNIQUE PROPERTIES CLOSE TO MONTPELIER



Vermont River Conservancy

- Public access to the cascades
- Pristine water quality



photo credit: John Lazenby



QUESTIONS?

